



帝为阀门
DKV VALVE

钢管 钢板 阀门 管件
PIPE PLATE VALVE FITTINGS

管道系统整体解决方案
Overall solution for piping system



广东帝为阀门有限公司
GUANGDONG DKV VALVE CO.,LTD



公司简介

COMPANY PROFILE



广东帝为阀门有限公司

GUANGDONG DKV VALVE CO.,LTD

管道系统工程整体解决方案

一站式现货供应



DKV帝为阀门-用专业、实用的阀门经验为您提供更加合适管道工程方案。DKV帝为阀门源于具有38年管道工程经验的建大集团，于2019年在中国佛山创立，是一家专业的管道流体控制阀门研制公司。DKV引进国外德国和日本的先进流体阀门方案，经过多年的研发，带来了高品质的电动阀门、气动阀门、自控阀门、食品卫生级阀门、工业通用及水用阀门等。DKV客户涵盖环保、水处理、医药、食品、印染、新材料、石油、化工、天然气、电力、核电、矿山、机械制造、特种罐体制造、市政建筑、地产建筑等诸多领域。DKV帝为阀门通过：欧盟CE认证、ISO9001质量管理体系认证、ISO14001环境管理体系认证、OHSAS18001职业健康安全管理体系认证、德国莱茵TÜV金品诚企认证、国家权威检测质量合格产品证书、及其他证书。

我公司一贯坚持重合同、守信用的原则。我们愿以优质的产品和周到的服务，在国内及国际市场上完成自己的使命。随着市场的不断更新和升级，我们将继续致力于生产领域，不断提高技术水平。

DKV valve - with professional and practical valve experience to provide you with more suitable pipeline engineering solutions. DKV Valve originated from JIANDA Group, which has 38 years of pipeline engineering experience. It was founded in Foshan, China in 2019. It is a professional pipeline fluid control valve development company. DKV has introduced advanced fluid valve solutions from Germany and Japan. After years of research and development, it has brought high quality electric valves, pneumatic valves, automatic control valves, food sanitation valves, industrial valves and water valves, etc. DKV customers cover many fields such as environmental protection, water treatment, medicine, food, printing and dyeing, new materials, petroleum, chemical industry, natural gas, electric power, nuclear power, mining, machinery manufacturing, special tank manufacturing, municipal construction, real estate construction and so on. DKV valve through certification: European CE certification, ISO9001 quality management system certification, ISO14001 environmental management system certification, OHSAS18001 occupational health and safety management system certification, Germany TUV Verified Supplier Certification, national authority testing quality qualified product certificate, and other certificates.

Our company always adheres to the principle of honoring contract and keeping good faith. We are willing to complete our mission in the domestic and international market with high quality products and considerate service. As the market continues to update and upgrade, we will continue to commit to the production field, and constantly improve the technical level.

Brands represented

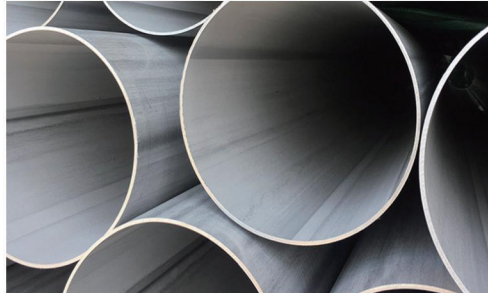


Stainless steel seamless, welded pipe and square pipe

Stainless steel industrial seamless pipes - 304/ TP304/TP316/310S/stainless steel thick wall pipes, customized



Stainless steel seamless pipe



Stainless steel welded pipe



Stainless steel square pipe

0Cr18Ni9(304)、06Cr19Ni10(TP304)、0Cr17Ni12M02(TP316L)、0Cr25Ni20(310S)

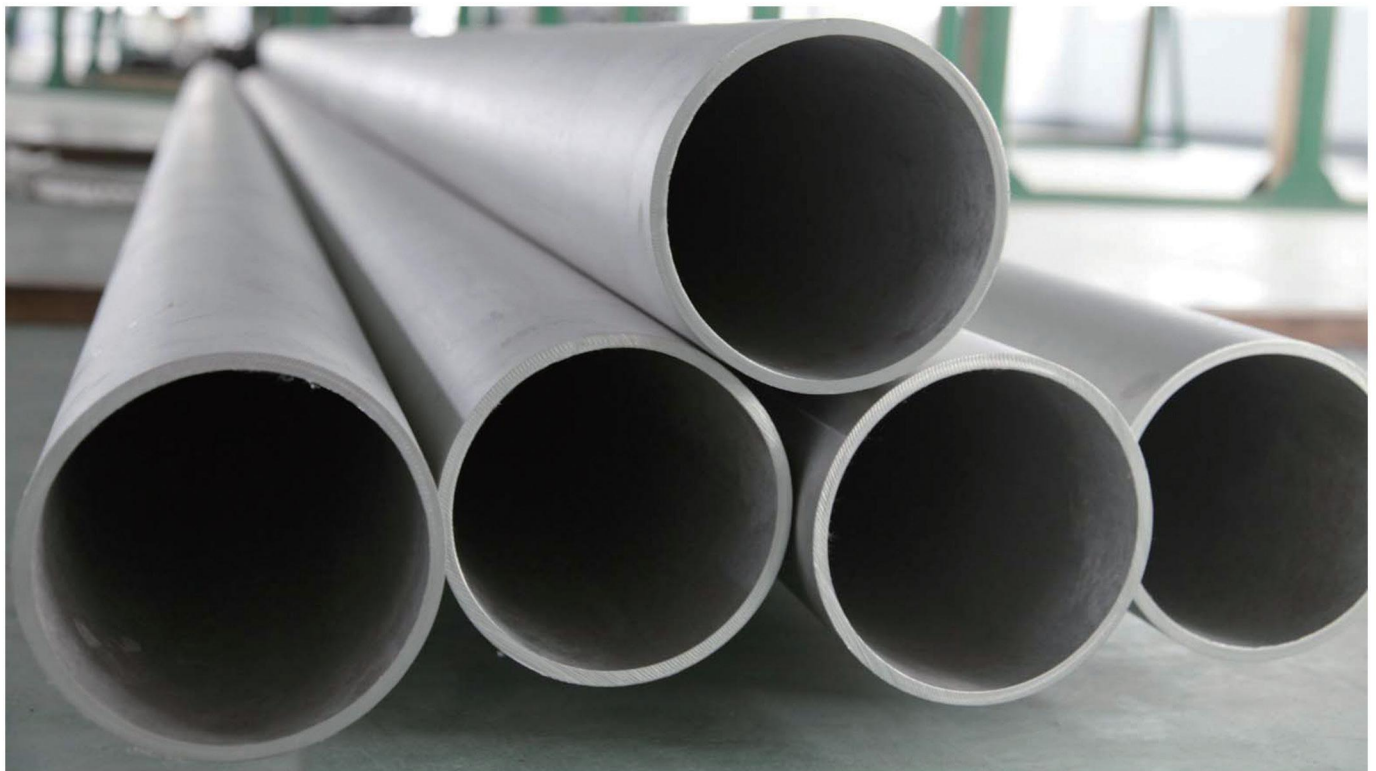
American standard seamless pipes, fixed length 6 meters, in stock

1、Can arrange national logistics and freight

Door-to-door delivery service:

- 1、Large amount of delivery within the Pearl River Delta
- 2、Fixed time, fixed line, fixed point, home delivery

**Guangdong general agent of more than 50 manufacturers
In-stock wholesale, low price, full range, one-stop purchasing**



Stainless pipes
water pipes and clamping pipes

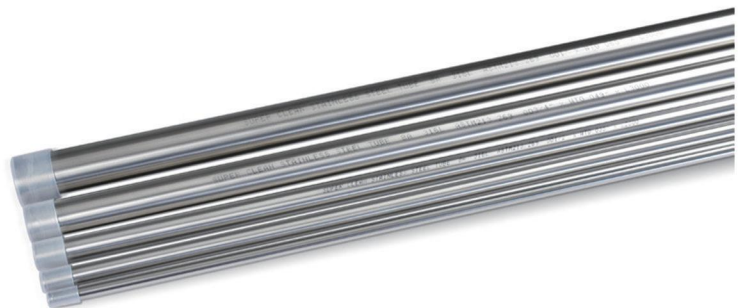
Thin-walled stainless steel pipe for fluid transfer--Sanitary water supply pipe



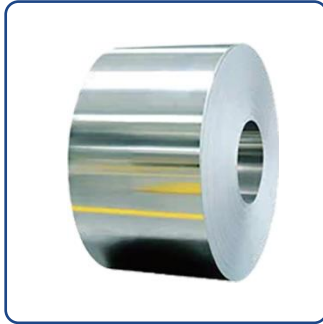
Thin wall stainless steel water pipe is a new type of pipe that came out in the late 1990s. It has a strong development momentum because of its safety and health, high strength, good corrosion resistance, firmness, long service life, maintenance free, beautiful and other characteristics. It has been widely used in building water supply and direct drinking water pipes.

With the development of national economy and the improvement of people's living standards, thin-walled stainless steel pipes and stainless steel fittings have become the new trend of the development of domestic water supply pipeline system and one of the most promising new pipes.

Widely used: Pharmaceutical, food, municipal drinking water



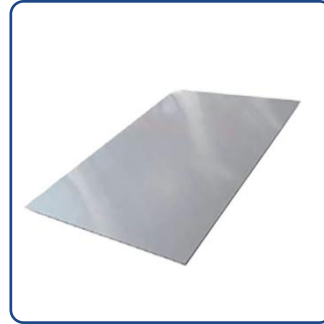
Stainless rolled steel and plate
Stainless rolled steel and plate



Cold rolled steel



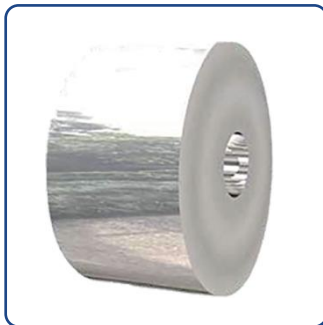
Hot rolled steel



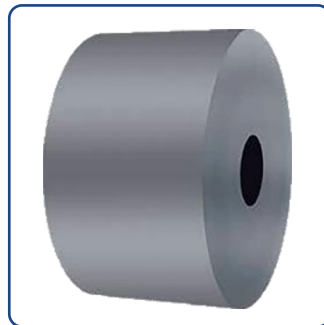
Cold rolled plate



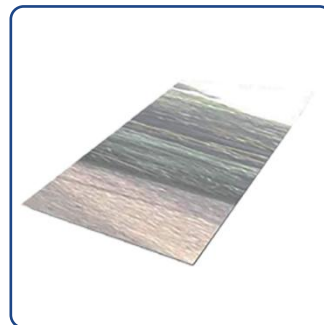
Hot rolled plate



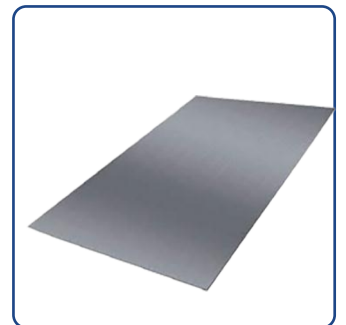
Cold rolled steel



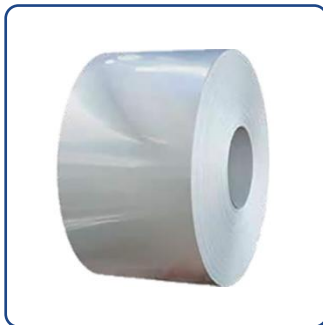
Cold rolled steel



Cold rolled plate



Cold rolled plate



Cold rolled steel



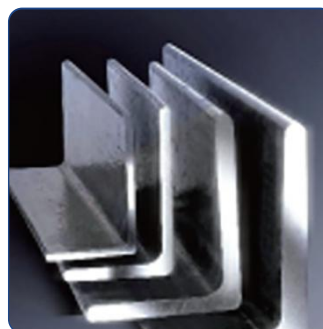
Cold rolled steel



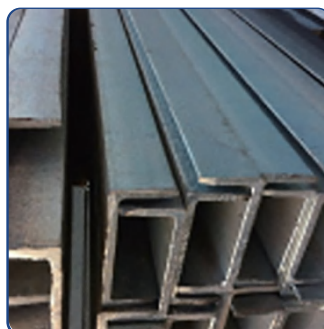
Cold rolled plate



Cold rolled plate



Angle steel



Channel

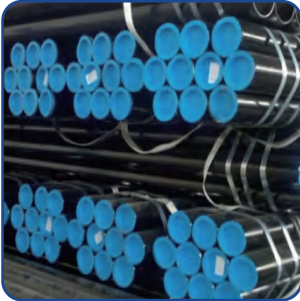


Hex steel

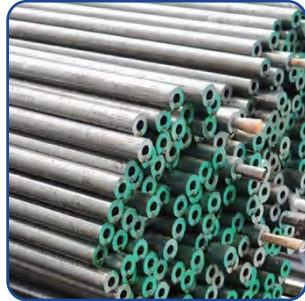


Round steel

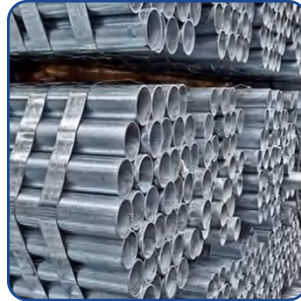
Carbon steel plate and steel pipe



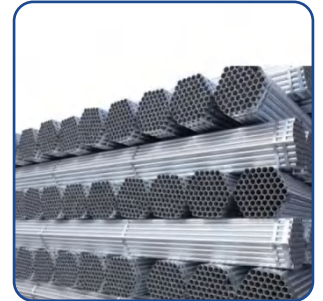
Black seamless pipe



GI seamless pipe



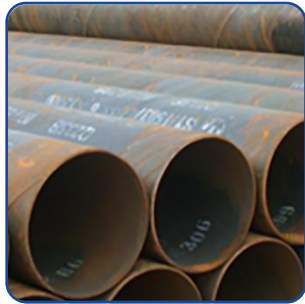
Plastic lined pipe



GI welded water pipe



Plastic lined water pipe



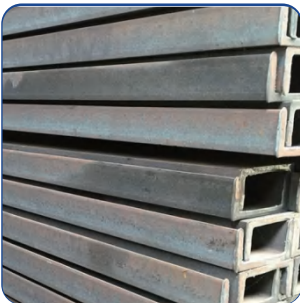
Spiral seamed pipe



Straight seamed pipe



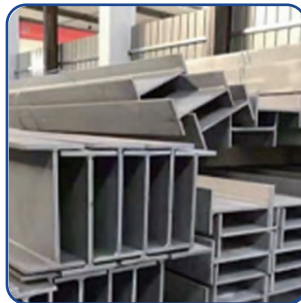
CS angle iron



CS channel



CS round



H-beam



GI angle iron



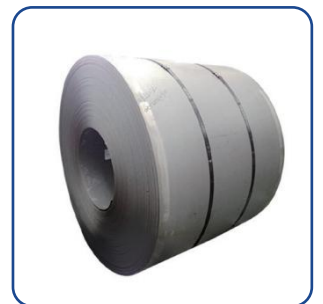
GI angle iron



Checkered plate



GI plate



CS coil plate

Stainless steel flange



PLRF flange



SORF FLANGE



WNRF FLANGE



Blind



Eight hole blind



Eight hole f lange



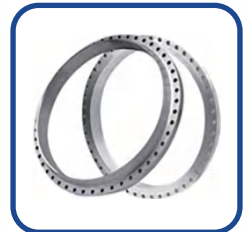
Welded f lange



Socket weld flange

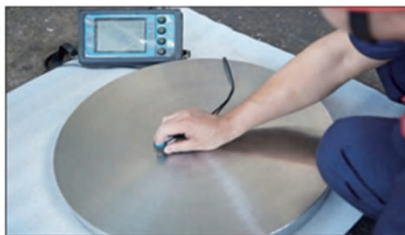


Necked butt weld flange



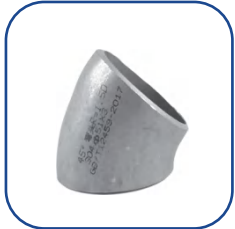
Tongue flange

Non standard flange drawings can be customized



HG/T20592-2009

Stainless steel fittings



45°elbow



90°elbow



Tee



Reducing tee



Crossing



Punching elbow



180°elbow



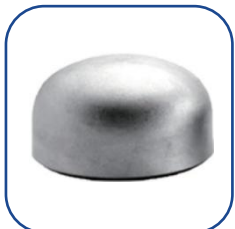
Long tee



Concentric reducer



Eccentric reducer



Cap



Flanging nipple



Cap



Ball-shaped cap



Butterfly cap



Quality professional No minus difference Standard fittings

Stainless steel sanitary fittings



45°elbow



90°elbow



Extended elbow



Tee



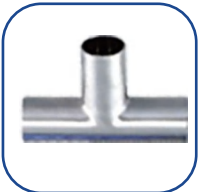
Cross



Reducing tee



Long tee



Extended tee



45°slanted tee



Reducing tee



180°elbow



Reducer



Concentric reducer



Eccentric reducer



Hose nipple



TC 45°elbow



TC 90°elbow



TC tee



TC cross



Threaded TC



TC reducer



TC 180°elbow



TC U-tee



Flange coupling



TC hose nipple



TC male coupling



TC sets



Reaming coupling



Extended TC coupling



Clam



Focus on quality
Safe and durable
Precision forging

Clamping fittings



45°female elbow



45°male elbow



90°reducing elbow



90°elbow



90°ED elbow



90°male elbow



Adjust direct coupling



Tee



Cross



Female reducing tee



Male reducing tee



Female reducing direct



Male reducing direct



Male direc



Direct coupling



Plug



Flange adapter



Water separator

High pressure fittings series



Coupling check valve



Coupling female nipple



Coupling tee



Coupling socket



Coupling male nipple



Coupling weld socket



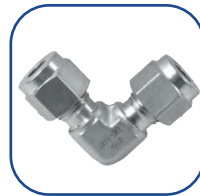
Weld tee



Coupling male socket



Weld elbow



Coupling elbow



Coupling union



Coupling hose nipple



Coupling hose nipple



Weld/thread elbow



Coupling PRV



Coupling needle valve



Coupling ball valve



Coupling ball valve

Stainless steel trench fitting



90°elbow



45°elbow



Reducing tee



Reducing socket



Tee



Cross



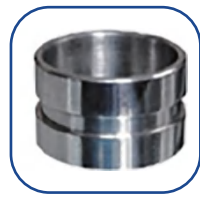
Coupling flange



Coupling clamp



Reducing direct



Coupling



Coupling clamp



Reducing cross

Sanitary valve



Butterfly valve



Butterfly valve



TC /well butterfly valve



3pc butterfly valve



3pc ball valve



Check valve



Check valve



Manual control valve



Y control valve



T control valve



TC ball valve



TC 3-way valve



TC butterfly valve



TC ball valve



Stall-free ball valve



Stall-free ball valve



3-way ball valve



Male ball valve



Female ball valve



Thread 3-way ball valve



Thread butterfly valve



3-way butterfly valve



Flange butterfly valve



Handle butterfly valve



Check valve



Check valve



Wafer check valve



Thread check valve



Breathing valve



Sampling valve

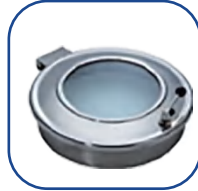
Manhole Series



High pressure manhole



Manhole cover



Beer manhole cover



Oval pressure manhole



Pressure sight manhole



Pressure manhole



Manhole cover



Manhole cover



Manhole cover



Manhole cover



Manhole cover



Oval manhole cover



Boom manhole



High pressure manhole



Boom manhole



Round side hole

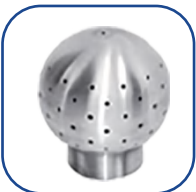


Oval manhole



Clamp manhole

Sanitary cleaner series



Fixed cleaning ball



Fixed cleaning ball



Fixed cleaning ball



Fixed cleaning ball



Rotary cleaning ball



Rotary cleaning ball



Rotary cleaning ball



Rotary cleaning ball



Rotary cleaning ball



Rotary cleaning ball



Rotary cleaning ball



Rotary cleaning ball

Sanitary sight glass series



Hex sight glass



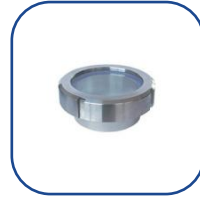
Hex sight glass



Wiper sight glass



Light sight glass



Union sight glass



Union sight glass



Union sight glass



Pipe sight glass



Pipe sight glass



Thread sight glass



Pipe sight glass



Sight glass



Sight glass



Cross sight glass



Tee sight glass



Tapered sight glass

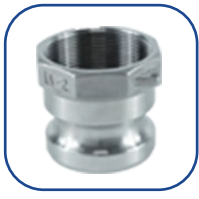


Impeller sight glass



Square sight glass

Stainless steel coupling



A type



B type



C type



D type



F type



E type



DC type



DP type



CF type



Explosion-p roof



F/F coupling



M/F coupling

Stainless steel thread fittings



45°elbow



90°elbow



Socket



Tee



Cross



Y tee



Union



Reducing tee



Reducing
socket



Reducing
elbow



Male tee



Male cross



Reducing
nipple



Hex nipple



45°M/F elbow



90°M/F elbow



M/F tee



Male union



Bushing



Plug



Cap



Elbow hose
nipple



Female hose
nipple



Hex hose
nipple



Hex M/F wut



hex M/F nipple



single thread
Nipple



double thread
Nipple



Full socket



Hex hose
nipple

Stainless steel thread valve



1pc ball valve



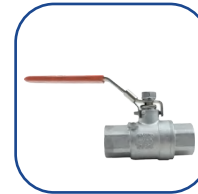
2pc ball valve



3pc ball valve



Thread ball valve



Ball valve



M/M ball valve



M/F ball valve



3-way ball valve



Male ball valve



Thread 3-way ball valve



Butterfly ball valve



Female gate valve



Needle valve



Globe valve



Welding needle valve



Gate valve



Gate valve



Locking gate valve



swing check valve



Vertical check valve



Trap valve



Vent Valve



Y strainer



3 way Ball valve

Quality recommendation

Supplied by the manufacturer

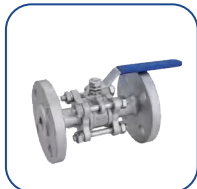
Complete specifications



Stainless steel valve



Ultra-thin ball valve



3pc flange ball valve



Flange ball valve



Flange fixed ball valve



Floating ball valve



Drain ball valve



Plug Valve



Insulated ball valve



Swing check valve



Lift check valve



3-way ball valve



Gate valve



Gate valve



Gost Gate valve



JIS Gate valve



Gate valve



Gate valve



Gate valve



Insulated jacketed globe valve



Plug valve



Globe gate



Globe valve



Y globe valve



Globe valve



3-way globe valve



Globe valve



Globe valve



Vertical check valve



JIS check valve



Strainer

Industrial valve



Floating ball valve



Fixed ball valve



Fixed ball valve



Eccentric half ball valve



Handwheel ball valve



V-ball valve



3-way ball valve



Orbital ball valve



Gate valve



Gate valve



Gate valve



Gate valve



Gate valve



Globe valve



Oxygen special valve



Globe valve



Globe valve



Natural gas flange ball valve



Natural gas flange ball valve



Wafer check valve



Single flap check valve



Float trap



Basket type filter



Check valve



Foot valve



Breathing valve



Pneumatic handle stop valve



Pinch valve



Drain valve



Back pressure valve

Knife gate valve



Electric knife gate valve



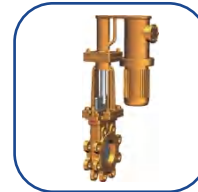
Electric knife gate valve



Electric knife gate valve



Electrohydraulic knife gate valve



Electrohydraulic knife gate valve



Pneumatic knife gate valve



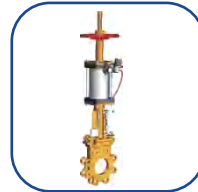
Manual knife type gate valve



Manual knife type gate valve



Manual knife type gate valve



Manual knife type gate valve



Pneumatic knife type gate valve



Electrohydraulic knife gate valve



Manual knife type gate valve



Manual knife type gate valve



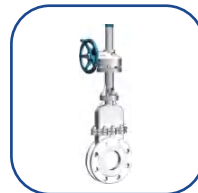
Hydraulic knife type gate valve



Hydraulic knife type gate valve



Bevel gear knife gate valve



Bevel gear knife gate valve



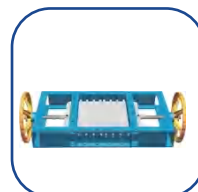
Pneumatic ceramic double gate valve



Manual ceramic cutter type slag discharge valve



Spirat gate valve



Square gate valve

Solenoid valve



PVC solenoid valve



SS solenoid valve



Square solenoid valve



Needle solenoid valve



Brass solenoid valve



Square brass solenoid valve



Pneumatic SS solenoid valve



PVC round solenoid valve



Gas solenoid valve



2-way solenoid valve



Flange solenoid valve



Piston solenoid valve

Electric valve



PVC 2-way ball valve



PVC 3-way ball valve



Grade ball valve



3-way ball valve



3pc ball valve



Sanitary butterfly valve



Thread ball valve



Flange ball valve



High pressure ball valve



3-way thread ball valve



Soft seal butterfly valve



Lug butterfly valve



Thread ball valve



Flange ball valve



High pressure ball valve



3-way thread ball valve



Soft seal butterfly valve



Lug butterfly valve

Pneumatic valve



Ultra-thin ball valve



PVC 2-way ball valve



PVC 3-way ball valve



Flange ball valve



3pc ball valve



3-way thread ball valve



PVC butterfly valve



Flange valve



Flange ball valve



Soft seal butterfly valve



Fluorine lined butterfly valve



Flange 3-way ball valve



3pc ball valve with F.R.L.



Wafer butterfly valve with F.R.L.



Wafer butterfly valve with F.R.L.



Wafer butterfly valve with F.R.L.



Wafer butterfly valve with F.R.L.



Pneumatic sanitary butterfly valve



pneumatic angle valve thread type



pneumatic angle valve flange type



pneumatic angle valve type TC



pneumatic angle type T



pneumatic angle valve thread welded



T type pneumatic flange waist drum valve



Pneumatic TC butterfly valve



Pneumatic thread butterfly valve



Pneumatic weld butterfly valve



Limit switch



Solenoid valve



Air filter

Self-regulating valve



Pneumatic regulating valve



Pneumatic regulating valve



Pneumatic regulating valve



Pneumatic diaphragm valve



Pneumatic regulating valve



Pneumatic regulating valve



Pneumatic single regulating valve



Electric single regulating valve



Electric 3-way regulating valve



Electric regulating valve



Electric double regulating valve



Electric regulating valve



Electric 3-way regulating valve



Double seated regulating valve



3-way regulating valve



Single seated single regulating valve



Single seated regulating valve



Piston shut-off valve



Pneumatic shut-off valve



Self-regulating valve



Self-regulating valve



Self-regulating valve



Self-regulating valve



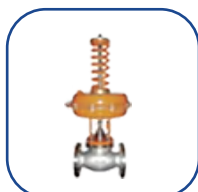
Electric regulating valve



Self-regulating valve



Self-regulating valve



Self-regulating valve



Self-regulating valve



Self-regulating valve



Self-regulating valve

Water valve



Ball float control valve



Pressure reducing valve



Slow closed check valve



Flow control valve



Electric hydraulic control valve



Electric remote valve



Differential Pressure Bypass Balancing Valve



Emergency Shut-off Valve



Pressure Reducing valve



Stabilization Valve



Safety Decompression valve



Pressure Reducing Valve



Pressure Reducing Valve



Electric remote Valve



Antifouling block valve



Elastic Sealed Gate Valve



Rising Stem Gate Valve



Non Rising Gate Valve



Gate valve



Flange Globe Valve



Screwed Globe Valve



Lift Check Valve



Swing Check Valve



Flange Globe Valve



Bottom Valve



Bottom Valve



Bottom Valve



Air release valve



Air release valve



Basket Type Filter

Water valve



Butterfly valve



Hard sealing butterfly valve



Butterfly valve



Butterfly valve



Butterfly valve



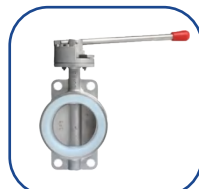
Butterfly valve



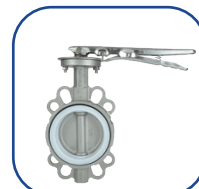
Butterfly valve



Teflon coated butterfly valve



Silicone butterfly valve



Teflon butterfly valve



Butterfly valve



Teflon butterfly valve



Flange butterfly valve



Flange butterfly valve



Flange butterfly valve



Butterfly valve TL type



Hard sealing butterfly valve



Butterfly valve



Butterfly valve lug type



Pneumatic powder butterfly valve



Hard sealing butterfly valve



Hard sealing flange butterfly valve



Flange butterfly valve



Telescopic butterfly valve



Hard sealing flange butterfly valve



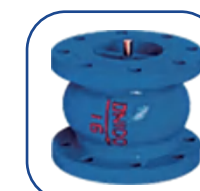
Butterfly valve



Teflon butterfly valve



Butterfly type check valve



Silent check valve



Wafer Check Valve

Industrial valves for
steam and oil



CS gate valve



CS globe valve



FS SW check valve



SS/FS check valve



CS globe valve



FS SW ball valve



FS FL check valve



FS TH check valve



FS SW strainer



FS ball valve



FS TH check valve



FS TH gate valve



FS globe valve



FS FL gate valve



FS FL gate valve



FS TH bellows globe valve



FS TH globe valve



FS TH bellows gate valve



AGFY-F trap valve



CA14 trap valve



K991 trap valve



TSS43H trap valve



ZMQSY trap valve



Gas-liquid two-phase flow



883F trap valve



881 trap valve



991F trap valve



CF11 trap valve



816 trap valve



815 trap valve

**INDUSTRIAL VALVES
FOR STEAM AND OIL**



FT44H trap valve



FT14 trap valve



FT14HC trap valve



FT43H trap valve



GH2FY trap valve



AIC trap valve



GFY trap valve



GHFY-III trap valve



GH5 trap valve



GH4 trap valve



KD12 trap valve



GSB trap valve



Y43H PRV



Y42X/F PRV



YGa43H PRV



YGa43H PRV



DP17 PRV



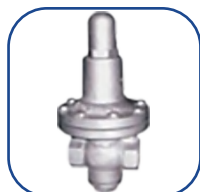
DP27 PRV



25P PRV



Y14/F PRV



YT11H PRV



YZ11X PRV



WYT945H/Y PRV



GP-1000 PRV



Y45H/Y PRV



ZSX41X PRV



T40H PRV



ZAZP PRV



BRV1/2S PRV



200P PRV

CAST STEEL/IRON SERIES



1.1PC ball valve



Ball type drain valve



CS ball valve



CI gate valve



CI gate valve



CS ball valve



Fixed ball valve



Globe valve



Gate valve



Piston type PRV



Drain valve



Piston valve



Globe valve



Gate valve



Lift check valve



Swing check valve



Lift check valve



Y strainer



DI safety valve



DI safety valve



CI safety valve



DI safety valve



Male spring-closed safety valve



Safety valve with lever



Safety valve with lever



Safety valve with lever



Safety valve



Safety valve with lever



Spring full-opening high pressure safety valve



Safety valve with lever

SAFETY VALVE SERIES



A21W/Y safety valve



A27W safety valve



A22w safety valve



A42W safety valve



A21H safety valve



A27H/Y safety valve



A22H safety valve



A28H/Y safety valve



A22H/W/F safety valve



A41W/Y safety valve



DA22Y safety valve



A42W/Y safety valve



A47W/Y safety valve



A41Y safety valve



A48W/Y safety valve



A42Y safety valve



A47Y safety valve



DA21F safety valve

BRASS VALVE SERIES



202 Gas ball valve



Ball valve



Ball valve



M/F ball valve



Female ball valve



Ball valve with lock



Telescopic ball valve



Locking ball valve



Locking ball valve



Locking ball valve



Filter ball valve



286 Gas ball valve

**BRASS VALVE
SERIES**



Full bore gate valve



Gate valve



Gate valve



Check gate valve



Locking gate valve



Locking gate valve



Telescopic ball valve



Coupling gate valve



Gate valve with meter



Locking check gate valve



Gate valve



Locking telescopic gate valve



Check valve



Check valve



Check valve



Vertical check valve



Vertical check valve



Behind-the-meter check valve



Flange gate valve



Flange globe valve



Flange gate valve



Flange check valve



Flange ball valve



Flange Y strainer



Vent valve



Y strainer



Y strainer



Y strainer



PRV with gauge



Balance valve

Gauge size



Y100 pressure gauge



YTN pressure gauge



YTNXC pressure gauge



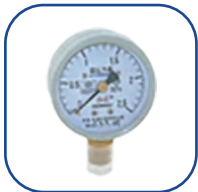
YE-100 pressure gauge



SS pressure gauge



SS pressure gauge



Oxygen pressure gauge



Acetylene pressure gauge



Diaphragm pressure gauge



Diaphragm pressure gauge



Clamp pressure gauge



Protector pressure gauge



Pressure gauge



Pressure gauge



Pressure gauge



Pressure gauge



Pressure gauge



Pressure gauge



Differential telemetry pressure gauge



Oxygen PRV



Acetylene PRV



Thermometers



Thermometers



Thermometers



Thermometers



Thermometers



Thermometers



Thermometers



Thermometers



Thermometers

Flowmeter series



LUGB flowmeter



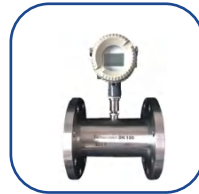
LUGB flowmeter



LUGB flowmeter



LUX flowmeter



LWGY flowmeter



V type flowmeter



Flowmeter



Flowmeter



Flowmeter



Flowmeter



Flowmeter



Flowmeter



Flowmeter



Flowmeter



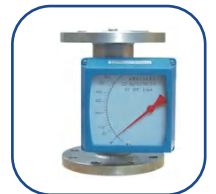
Flowmeter



Flowmeter



Flowmeter



Flowmeter



Flowmeter



Flowmeter



Flowmeter



Flowmeter



Flowmeter



Flowmeter



Flowmeter



Flowmeter



Flowmeter



Flowmeter



Flowmeter



Flowmeter

Flowmeter series



Flowmeter



Flowmeter



Flowmeter



Flowmeter



Flowmeter



Flowmeter



Flowmeter



Flowmeter



Flowmeter



Flowmeter



Flowmeter



Flowmeter



Flowmeter



Flowmeter



Electromagnetic
flowmeter



LZB flowmeter



Flange COCK



Thread COCK

Level gauge series



BUQK lever controller



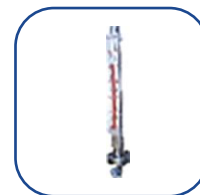
UQK lever
controller



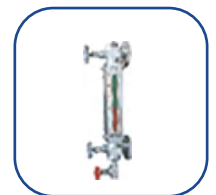
UQK lever
controller



Level gauge



Level gauge



Level gauge



Level gauge



Lever controller



Lever controller



Lever controller



Level gauge



Level gauge

Galvanized fittings



45°elbow



90°elbow



Reducing elbow



Reducing tee



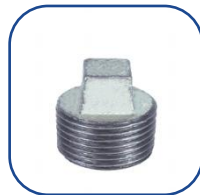
Socket



Tee



Cross



Plug



Cap



Socket



Union



Nipple



Reducing socket



Bushing



M/F elbow



Reducing cross



Bend



Quick connector

Malleable cast iron pipe fitting series



90°elbow



45°elbow



Socket



Nipple



M/F elbow



Tee



Cross



Cross



Reducing socket



Union



Plug



Bushing

Grooved pipe fittings series



90°elbow



45°elbow



45°elbow



90°elbow



90°reducing elbow



11.25°elbow



22.5°elbow



45°elbow



Tee



Reducing tee



Reducing cross



Cross



Grooved reducing socket



Grooved cross



Grooved clamp



Grooved tee



Grooved tee



Cap

Lining plastic grooved fitting



Reducing elbow



45°elbow



90°elbow



Tee



Cross



Reducing cross



Reducing cross



Reducing socket



Socket



Union



Nipple



Cap

vpcvalve



PVC Handle butterfly valve



PVC Handle butterfly valve



Conjoined butterfly valve



pvc double order ball valve



Headless ball valve



worm butterfly valve



worm butterfly valve



pvc butterfly valve



pvc butterfly valve



worm butterfly valve



headless butterfly valve



headless butterfly valve



3-way ball valve



pvc high platform ball valve



red handle butterfly valve



pvc two piece ball valve



3-way ball valve

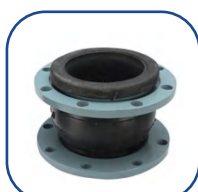


lapped flange

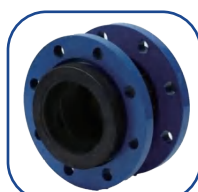
Flexible connection



Flexible connection



Flexible connection



Flexible connection



Flexible connection thread type



Metal flexible connection



Flexible metal conduit



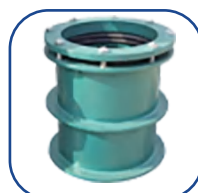
Teflon coated flexible connection



Silicone rubber flexible connection



Flexible connection



Wear casing wall



Double flange power



Flexible connection

Carbon steel flange



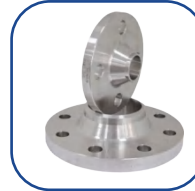
Flange



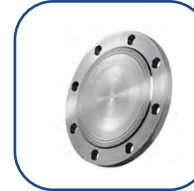
Flange



Flange



Flange



Blind flange



Nonstandard flange

Iron fittings



Elbow



Tee



Cross



Reducer



Eccentric reducer



Cap

Sealing material



EPDM gasket



EPDM gasket for flange



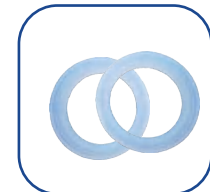
EPDM gasket for flange



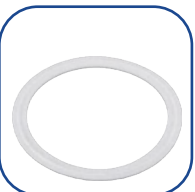
Stainless steel gasket



PTFE gasket



Silicone gasket



PTFE gasket



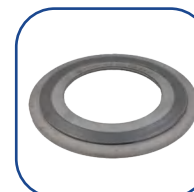
Metal gasket A type



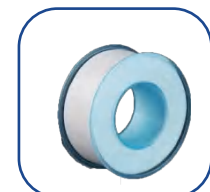
Metal gasket B type



Metal gasket C type



Metal gasket D type



PTFE

Flange pitch correspondence table

PN10 板式平焊法兰 (GB/T9119-2010)						PN16 板式平焊法兰 (GB/T9119-2010)						PN25 板式平焊法兰 (GB/T9119-2010)								
DN	外径 D	螺栓中心距	螺栓孔径L	螺栓数	厚度	RF重量	DN	外径 D	螺栓中心距	螺栓孔径L	螺栓数	厚度	RF重量	DN	外径 D	螺栓中心距	螺栓孔径L	螺栓数	厚度	RF重量
10	90	60	14	4	14	0.54	10	90	60	14	4	14	0.54	10	90	60	14	4	14	0.54
15	95	65	14	4	14	0.60	15	95	65	14	4	14	0.60	15	95	65	14	4	14	0.60
20	105	75	14	4	16	0.86	20	105	75	14	4	16	0.86	20	105	75	14	4	16	0.86
25	115	85	14	4	16	1.02	25	115	85	14	4	16	1.02	25	115	85	14	4	16	1.02
32	140	100	18	4	18	1.71	32	140	100	18	4	18	1.71	32	140	100	18	4	18	1.71
40	150	110	18	4	18	1.87	40	150	110	18	4	18	1.87	40	150	110	18	4	18	1.87
50	165	125	18	4	20	2.48	50	165	125	18	4	20	2.48	50	165	125	18	4	20	2.48
65	185	145	18	8	20	2.84	65	185	145	18	8	20	2.84	65	185	145	18	8	22	3.16
80	200	160	18	8	20	3.25	80	200	160	18	8	20	3.25	80	200	160	18	8	24	3.97
100	220	180	18	8	22	4.19	100	220	180	18	8	22	4.19	100	235	190	22	8	26	5.83
125	250	210	18	8	22	5.20	125	250	210	18	8	22	5.20	125	270	220	26	8	28	7.91
150	285	240	22	8	24	7.01	150	285	240	22	8	24	7.01	150	300	250	26	8	30	10.17
200	340	295	22	8	24	8.50	200	340	295	22	12	26	9.00	200	360	310	26	12	32	13.43
250	395	350	22	12	26	10.98	250	405	355	26	12	29	13.27	250	425	370	30	12	35	19.14
300	445	400	22	12	26	12.20	300	460	410	26	12	32	17.43	300	485	430	30	16	38	24.93
350	505	460	22	16	30	17.35	350	520	470	26	16	35	23.02	350	555	490	33	16	42	35.49
400	565	515	26	16	32	22.49	400	580	525	30	16	38	30.10	400	620	550	36	16	48	50.22
450	615	565	26	20	36	26.72	450	640	585	30	20	42	38.30	450	670	600	36	20	54	59.67
500	670	620	26	20	38	32.65	500	715	650	33	20	46	54.74	500	730	660	36	20	58	75.77
600	780	725	30	20	42	44.40	600	840	770	36	20	55	88.56	600	845	770	39	20	68	111.92
700	895	840	30	24	50	74.39	700	910	840	36	24	63	100.88	700	960	875	42	24	85	179.71
800	1015	950	33	24	56	106.54	800	1025	950	39	24	74	146.61	800	1085	990	48	24	95	251.52
900	1115	1050	33	28	62	130.96	900	1125	1050	39	28	82	179.81							
1000	1230	1160	36	28	70	177.19	1000	1255	1170	42	28	90	256.01							
1200	1455	1380	39	32	83	282.54	1200	1485	1390	48	32	95	359.77							
1400	1675	1590	42	36	90	384.48	1400	1685	1590	48	36	103	449.82							
1600	1915	1820	48	40	100	563.40	1600	1930	1820	56	40	115	665.58							
1800	2115	2020	48	44	110	692.28	1800	2130	2020	56	44	126	814.34							
2000	2325	2230	48	48	120	868.61	2000	2345	2230	62	48	138	1014.92							

Seamless pipe size and thickness correspondence table

SIZE		外形尺寸							美标壁厚表 ANSI B36.10 B36.19					日标厚度	德标厚度	
DN	in	ANSI B36.10	GB8163/3087	JIS	ISO 42001	BS 3600	DIN 2448 DIN	SCH 5s	SCH 10s	SCH 10	SCH 40S	STD	SCH 40	JIS	DIN	
6	1/8	10.3			10.5	10.2	10.2	10.5	-	1.24	-	1.73	1.73	1.73		
8	1/4	13.7			13.8	13.5	13.5	1.5	-	1.65	-	2.24	2.24	2.24		
10	3/8	17.1	14	17	17.3	17.2	17.2	17.2	-	1.65	-	2.31	2.31	2.31		
15	1/2	21.3	18	22	21.7	21.3	21.3	21.3	1.65	2.11	-	2.77	2.77	2.77	2.8	2
20	3/4	26.7	25	27	27.2	26.9	26.9	26.9	1.65	2.11	-	2.87	2.87	2.87	2.8	2.3
25	1	33.4	32	34	34	33.7	33.7	3.7	1.65	2.77	-	3.38	3.38	3.38	3.2	2.6
32	1.1/4	42.2	38	42	42.7	42.4	42.4	42.4	1.65	2.77	-	3.56	3.56	3.56	3.5	2.6
40	1.1/2	48.3	45	48	48.6	48.2	48.3	48.3	1.65	2.77	-	3.68	3.68	3.68	3.5	2.6
50	2	60.3	57	60	60.5	60.3	60.3	60.3	1.65	2.77	-	3.91	3.91	3.91	3.8	2.9
65	2.1/2	73	76		76.3	76.1	76.1	76.1	2.11	3.05	-	5.16	5.16	5.16	4.2	2.9
80	3	88.9	89		89.1	88.9	88.9	88.9	2.11	3.05	-	5.49	5.49	5.49	4.2	3.2
90	3.1/2	101.6			101.6		101.6	101.6	2.11	3.05	-	5.74	5.74	5.74	4.2	
100	4	114.3	108	114	114.3	114.3	114.3	114.3	2.11	3.05	-	6.02	6.02	6.02	4.5	3.6
125	5	141.3	133	140	139.8	139.7	139.7	139.7	2.77	3.4	-	6.55	6.55	6.55	4.5	4
150	6	168.3	159	168	165.2	168.2	163.3	168.3	2.77	3.4	-	7.11	7.11	7.11	5	4.5
175	7				190.7		193.7	193.7			-					
200	8	219.1	219		216.3	219.1	219.1	219.1	2.77	3.76	-	8.18	8.18	8.18	5.8	6.3
225	9				241.8						-					
250	10	273	273		267.4	273	273	273	3.4	4.19	-	9.27	9.27	9.27	6.6	6.3
300	12	323.9	325		318.5	323.9	323.9	323.9	3.96	4.57	-	9.53	9.53	10.31	6.9	7.1
350	14	355	377		355.6	355.6	335.6	335.6	3.96	4.78	6.35	-	9.53	11.13	7.9	8
400	16	406.4	426		406.4	406.4	406.4	406.4	4.19	4.78	6.35	-	9.53	12.7	7.9	8.8
450	18	457.2	480		457	457	457	457.2	4.19	4.78	6.35	-	9.53	14.27	7.9	10
500	20	508	530		508	508	508	508	4.78	5.54	6.35	-	9.53	15.09	7.9	11
550	22	558			558.8		559	558.8	4.78	5.54	6.35	-	9.53	-		
600	24	609.6	630		609.6	610	610	609.6	5.54	6.35	6.35	-	9.53	17.48		12.5

注：SCH5s、10s、40s、80s用于不锈钢ASTM B36.19

Sanitary pipe size and thickness correspondence table

SIZE	GB/T		ISO 1127		SMS ISO2037		DS		BS 4825		3A/BPE		IDF		DIN11850									
	I	II	OD	T	OD	T	OD	T	OD	T	OD	T	OD	T	Series0	Series1	Series2	Series3						
8	1/4				13.5	1.6						0.89												
10	3/8				17.2	1.6									12	1.5	12	1	13	1.5	14	2		
15	1/2	19	22	1.5	21.3	1.6					12.7	1.65			18	1.5	18	1	19	1.5	20	2		
20	3/4	25	27	1.5	26.9	1.6					19.05	1.65			22	1.5	22	1	23	1.5	24	2		
25	1	32		1.5	33.7	2	25	1.25	25.4	1.5	25.4	1.6	25.4	1.65	25.4	1.2	28	1.5	28	1	29	1.5	30	2
32	1.1/4	38	42	1.5	42.4	2	32	1.25	31.75	1.5					34	1.5	34	1	35	1.5	36	2		
40	1.1/2	45	48/51	1.5	48.3	2	38	1.25	38.1	1.5	38.1	1.6	38.1	1.65	38.1	1.2	40	1.5	40	1	41	1.5	42	2
50	2	57	60/63	2	60.3	2	51	1.25	50.8	1.5	50.8	1.6	50.8	1.65	50.8	1.2	52	1.5	52	1	53	1.5	54	2
65	2.1/2	76	76	2	63.5	2	63.5	1.5	63.5	1.5	1.6				63.5	2					70	2		
80	3	89	89	2	76.1	2.3	76.1	1.6	76.2	2	76.2	1.6	76.2	1.65	76.3	2					85	2		
90	3.1/2	102	102	2	88.9	2.3									89	2								
100	4	108	114	2	114.3	2.6	101.6	2	101.6	2	101.6	2	101.6	2.11	101.6	2					104	2		
125	5	133		2	139.7	2.6								127	2.11						129	2		
150	6	159		2	168.3	2.6								152.4	2.77						154	2		
200	8	219		2	219.1	2.6								203.2	2.77						204	2		

GB/T中国标准, ISO国际标准, DIN德国标准, IDF国际乳联标准, SMS瑞典标准, DS丹麦标准, 3A/BPE美国标准, BS英国标准